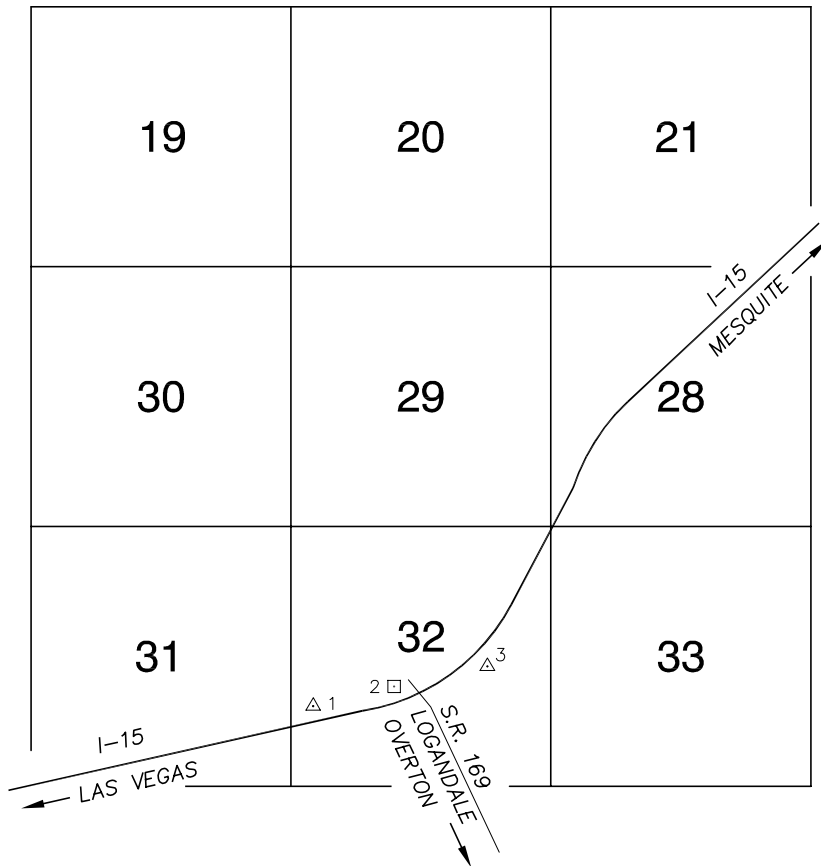


Township 14 South, Range 67 East Southwest Quarter



NORTH AMERICAN VERTICAL
DATUM OF 1988
- ALL ELEVATIONS IN METERS -

No.	STATION	ELEVATION (METERS)	F N D	DESCRIPTION
1	X 50 1934	509.776	F N D	4" BRASS CAP, IN CONCRETE, STAMPED "X50 1934", 0.65 MI. WEST OF S.R. 169, LOGANDALE/OVERTON I-15 INTERCHANGE, 25' SOUTH OF NORTH R.O.W. FENCE OF I-15, 2' NORTH OF CONCRETE TRIANGULAR GUARD POST.
2	3C47 32S6	541.799	F N D	RIVET AND SQUARE ALUMINUM PLATE IN NORTHWEST CORNER WINGWALL OF THE OVERPASS AT THE I-15 AND LOGANDALE/OVERTON OVERPASS.
3	B 160 1935	564.553	F N D	4" BRASS CAP, IN CONCRETE, STAMPED "B160 1935", 0.42 MI. EAST S.R. 169, LOGANDALE/OVERTON I-15 INTERCHANGE, 270' SOUTHEAST OF THE SOUTH JERSEY RAIL OF I-15.
4				
5				
6				
7				
8				
9				
10				
11				

CLARK COUNTY VERTICAL CONTROL v.2003

CLARK COUNTY SURVEYOR'S OFFICE
5051 SOUTH PARADISE ROAD
LAS VEGAS, NEVADA 89119
(702) 455-0640

CONVERSION FACTOR:
METERS X $\left(\frac{3937}{1200}\right)$ = U.S. SURVEY FEET

REVISED 2003

SHEET
1 OF 1

14-67
SW